

MONOGRAPHIC ANALYSIS OF THE DENSUȘ COMMUNE, HUNEDOARA COUNTY

CAMELIA MĂNESCU^{1*}, OANA MARIA SICOE-MURG¹, NICOLETA MATEOC-SÎRB¹, ALINA MĂNESCU², HUNOR VASS¹

¹University of Life Sciences "King Mihai I", from Timișoara, Faculty of Management and Rural Tourism, Romania

²West University of Timișoara, Faculty of Economics and Business Administration

Abstract: The authors of the paper make a presentation of the natural resources of Densuș commune, starting with its location on the map of Romania and on the map of Hunedoara county and continuing with the analysis of natural, demographic, economic, socio-cultural and ecological resources. The main methods used in the research are the analysis and diagnosis of the rural space, observation, graphic processing. The study ends with the main conclusions drawn from the analysis.

• Introduction

The history of Densuș commune is linked to the "Saint Nicholas" church. The church was built in the vicinity of the Ulpia Traiana Sarmizegetusa fortress, the former capital of Roman Dacia, the monument is still standing today on the left bank of Galbena. Certain research shows that the first ruins of the church date from the beginning of 301, but the current construction dates from the 12th-13th centuries.

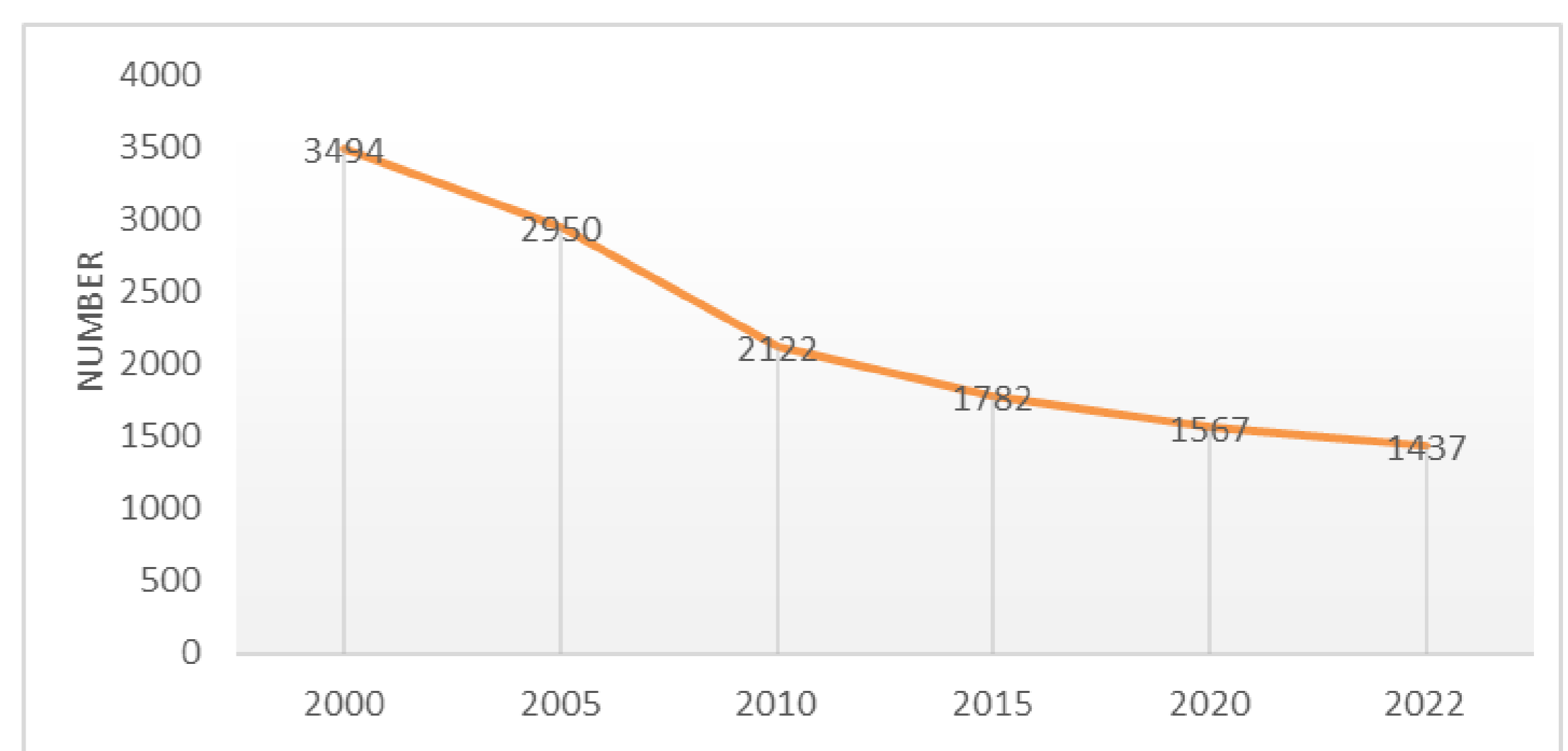
• Material and method

The main methods used in the research are the analysis and diagnosis of the rural space, observation, graphic processing.

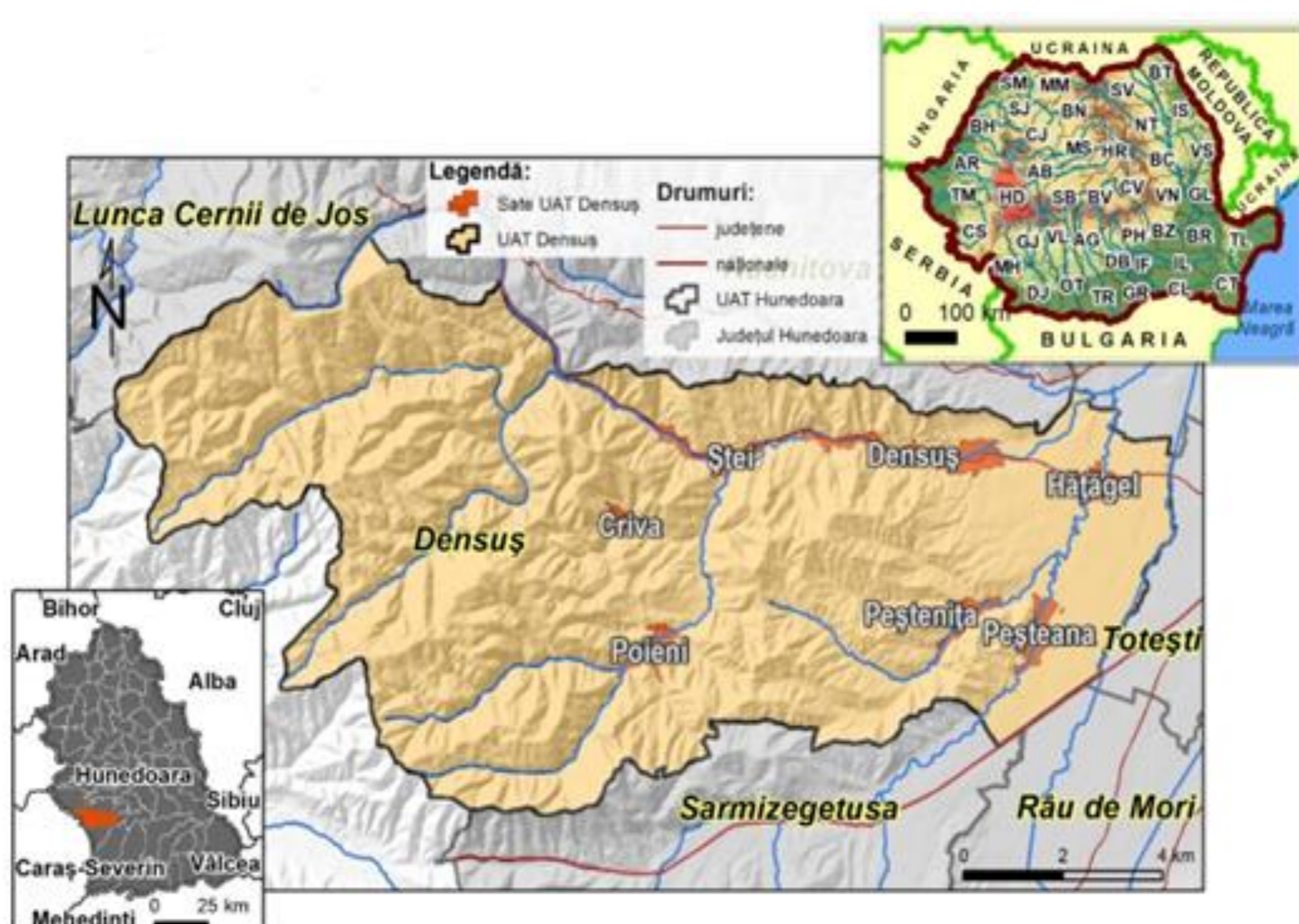
Densuș commune is located in the western part of Hunedoara county, in the Hațeg Depression, approximately 57 km away from Deva and 13 km from Hațeg.

• Results and discussions

• *The evolution of the residents.* According to the previous results from the statistical data, the villages from Densuș commune are facing a decline in population. If in 2000 the population of the commune was 3494 inhabitants, most of whom were in the residence of the commune (809), and the lowest population in the village of Criva (198), in 2022 the total population of the commune reached 1437 inhabitants, resulting a 59% decrease.



The evolution of Densuș residents between 2000-2022



The settlement of Densuș commune within the country, Hunedoara county and the villages belonging to the commune

The dominant socio-economic function of Densuș commune is represented by agriculture and forestry. The transport infrastructure of the commune is connected to the city of Hațeg via DJ 686 Densuș-Totești to the east and further by DN68 on the Totești-Hațeg distance. County road 687 (Totești-Densuș) is completely asphalted.

• Conclusions

Densuș commune has the chance to reborn, thanks to the resources it has, thanks to its favorable geographical position, thanks to the rich history it has behind it, starting from the 13th century, with the Church of Saint Nicholas, which for the locals is a "Romanian medieval architectural jewel", as well as the other touristic objectives in the locality.