

Timisoara, 25-26 May

LOCAL ACTION GROUPS - A POSSIBILITY OF RURAL AREA AND TRADITIONAL PRODUCTS ECONOMIC DEVELOPMENT. IMPORTANCE AND PROPOSALS

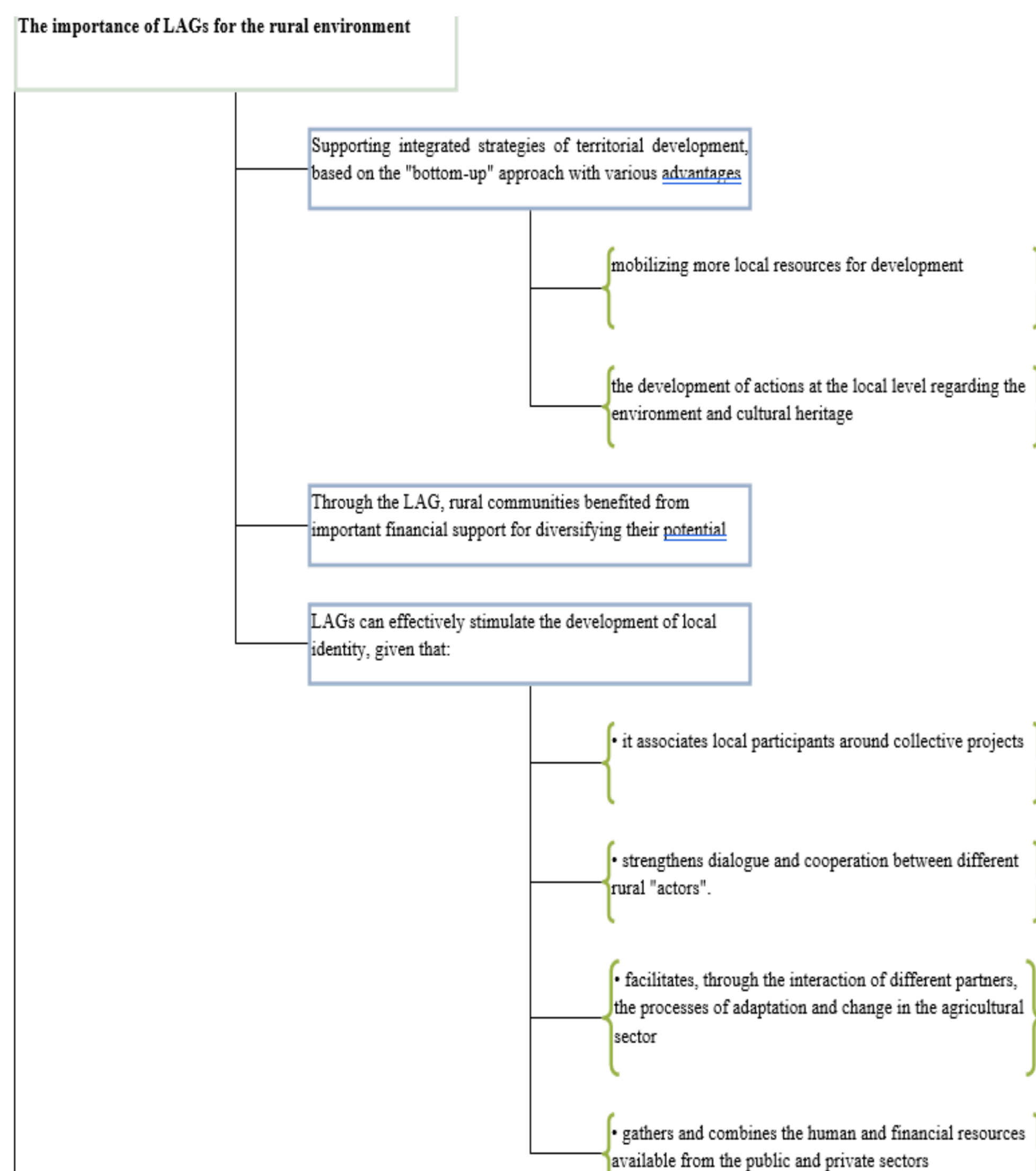
BALINT MARIA*¹, ZDREMTAN MONICA¹, MEȘTER MIHAELA¹,
DIACONESCU DANIELA¹, CHIȘ SABIN¹

¹"Aurel Vlaicu" University, Faculty of Food Engineering, Tourism and Environmental Protection, Arad, Romania

Abstract: *The lack of a realist vision of European village's future, on the necessary qualifications in the process of activities diversification, which would lay the foundations for a multifunctional rural development, is becoming more and more acute. Communities thus manage to exploit new ways to become or remain competitive, to exploit their goods and resources to the maximum, as well as to overcome the various difficulties they encounter, such as the aging population, the reduced level of health benefits services, the absence of employment opportunities or the large discrepancy regarding the development degree comparing to urban areas.*

Introduction

- From the experience of the LAGs operation through the LEADER perspective, the expression "Working With People (WWP)" was born, understood as the professional practice in a team that seeks - in addition to the development of technical management and project management skills - the production of goods and services - adding the development of behavioral skills and values to people involved that participate in the context of a territorial program.

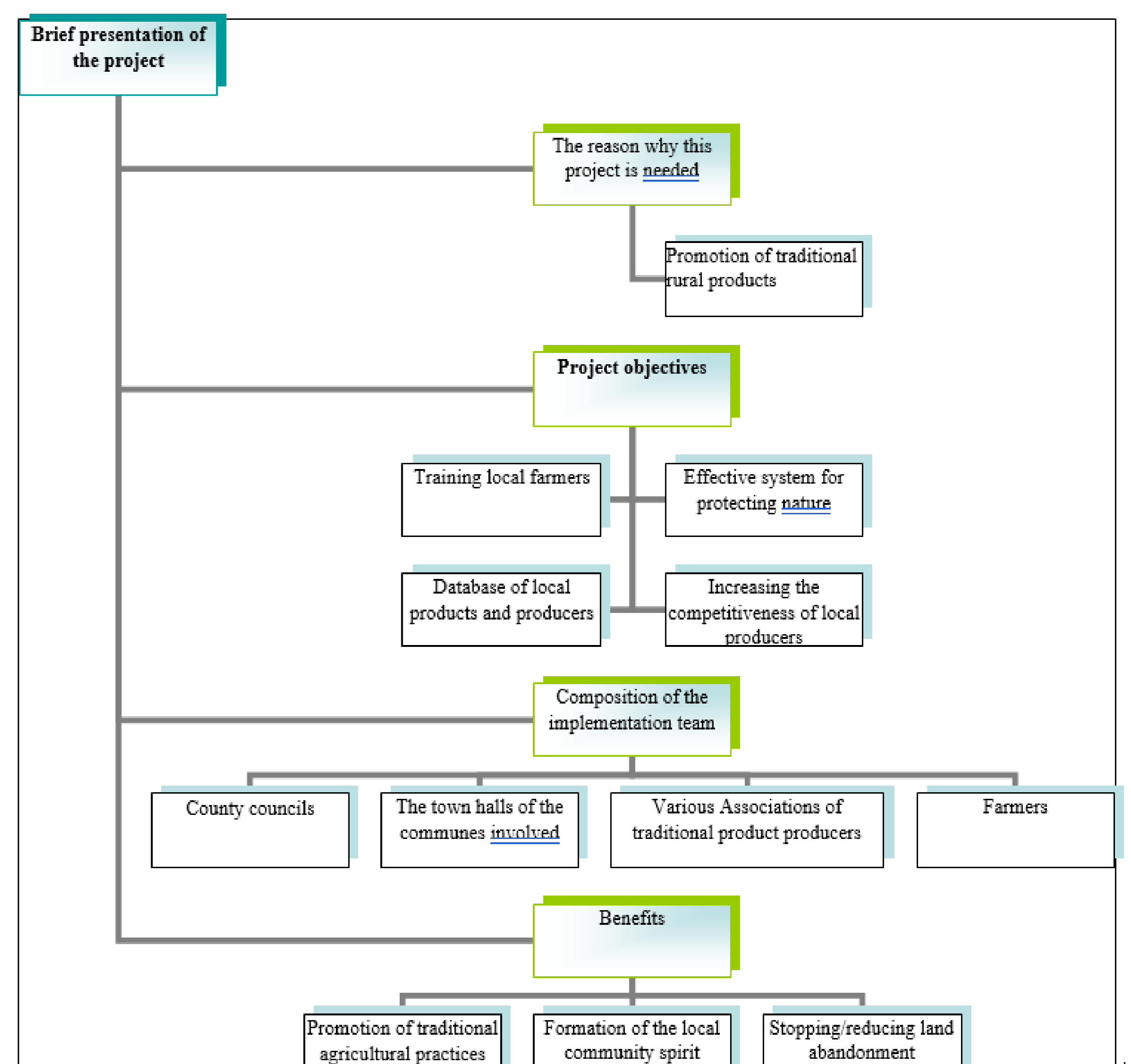


Material and method

The purpose of this research is to justify the fact that LAGs can be a way to support the development of the rural environment, and the proposed objectives are: mentioning the importance of LAGs. Thus, they were used theoretical and bibliographical resources as background for obtaining the final objectives proposed.

Results and discussions

We detail such a proposal in this research, namely: Reintegration of agriculture into social life through traditional products - possibility of local economic development through LAGs.



Conclusion

- Agriculture has been and is in recent years in decline. As a result, it is difficult for farmers to focus on future activities and development. Therefore, the support provided by the LAG is essential to support the reintegration of farms into the center of local life. Such a proposal helps to develop new visions and solutions for the future of agriculture. The bottom-up approach is demonstrated in all project activities. The LAG can recreate social links between local people and farmers by providing opportunities for them to meet, exchange and discuss the present and future of agriculture and farm life. These occasions have proven to be a good way to boost farmers' confidence.